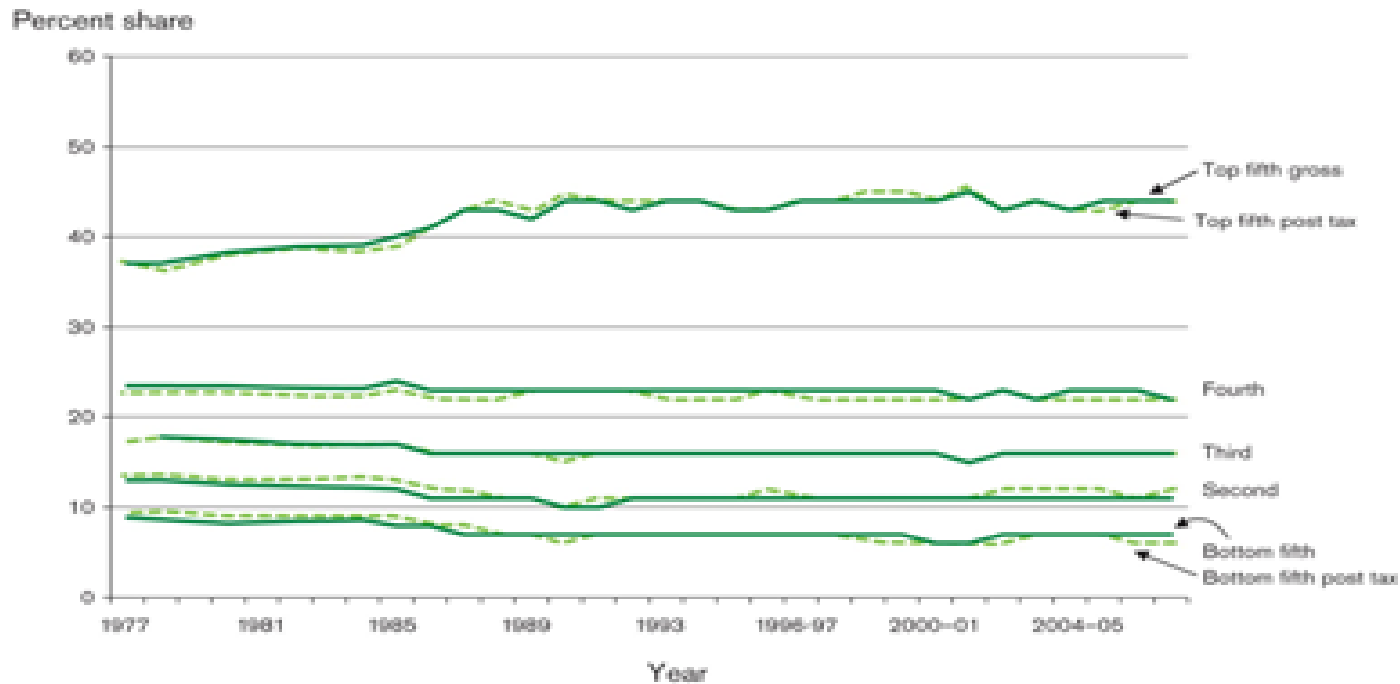


UK has become - and remains - a more unequal society

Figure 2.37 Percentage shares of equivalised total gross and post-tax income, by quintile groups for all households, 1978-2007/8



Note: Gross income comprises original income and direct cash benefits (e.g. pensions, child benefit, housing benefit and income support). Post-tax income comprises gross income after direct and indirect taxes (e.g. VAT).

Source: Office for National Statistics¹⁴⁸